

Troubleshooting

<i>Fault</i>	<i>Cause</i>	<i>Solution</i>
<i>Not work</i>	<i>Powerplug is in socket or not</i>	<i>Put the powerplug in the socket</i>
<i>Not work</i>	<i>turn on the switch on the back of the handrail</i>	<i>whether the switch is closed?</i>
<i>Working speed can not reach the settled speed</i>	<i>Voltage of electrified wire neting is low</i>	<i>Wait until the voltage is normal</i>
<i>Intensity is not enough</i>	<i>Voltage of electrified wire neting is low</i>	<i>Wait until the voltage is normal</i>

Technical Specification

Description: Vibration Massager

Model:HM01-08Q

Rated voltage: ~ 230V/50Hz

Rated power:120W

Maximum weight:120kg

weight:13.8kg

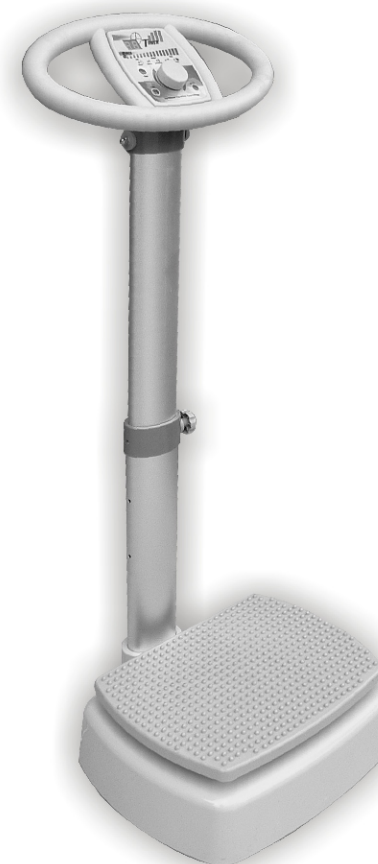
measurement:645×490×250mm

Accessories available

M6×120 screw	1
M6 capped nut	2
φ6×14×1 flat gasket	2
lock gasket	3
lock nut	4
inner hexagan spanner	2

Vibration Massager

HM01-08Q



INSTRUCTION

Please be sure to read the instruction manual carefully before operation and keep the instruction manual appropriately.

Safety notice

The following users should get doctor's permission before use.

People who suffer brain blood clot

People who suffer heart diseases

People who backbones are deformed

People who are under fracture and disjoint treatment

Women who are pregnant ,in menses fever and agnail after postoperative

Intellectual disturbance personage

People who have acute diseases ,serious cancer

People who have contagion ,skin diseases

People who haven't recovered after operation.

Don't use the "Vibration Massager" when the following conditions appear:

It is wet or doesn't work

The leather is broken or the machinery exposes.

Functions of Vibration Massager are out of control.

When thunder happens or the electronic power is wrong.

The wire is broken and the electric of leakage happens.

You should turn off the switch ,pull out the plug and consult the service center.

Cautions when use "Vibration Massager"

Please operate "Vibration Massager" according to manual.

Keep children far away from "Vibration Massager" so as not to hurt them when operating.

Don't drink when using "Vibration Massager" or water drop will clip into the inner of it.

Don't use it when your weight is ove120 kilos

Please use it after meal about one hour later .In order to achieve the best effect,

Please drink 100ml warm water before use it.

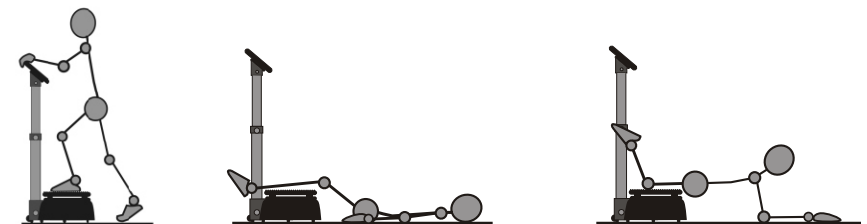
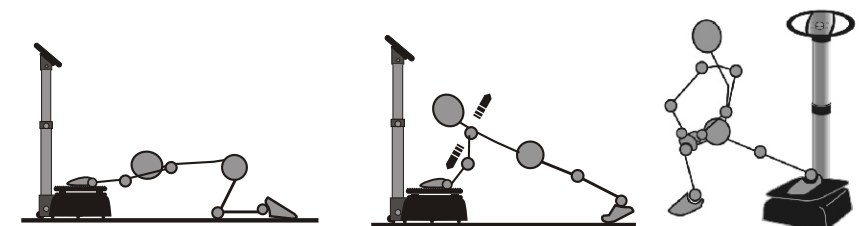
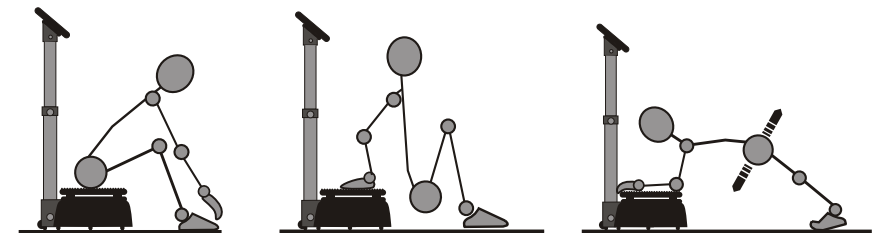
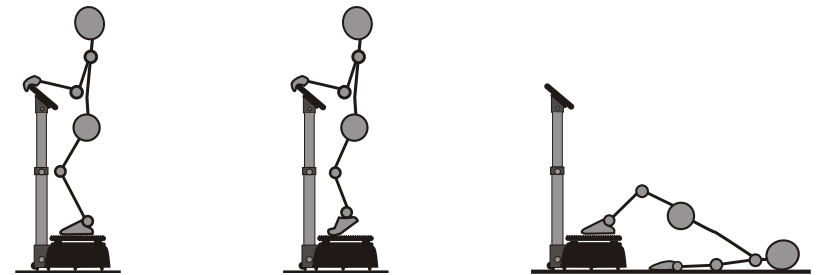
Cautions when not using "Vibration Massager"

To avoid children to turn the power supply incautiously ,be sure to turn off the general power supply after using it.

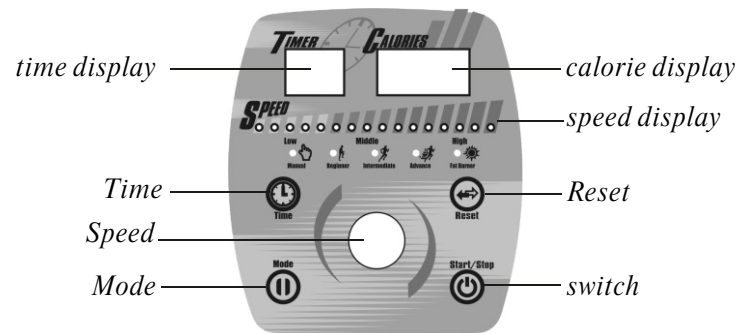
If not use it for a long time ,keep it clean and put it in a clean and dry place.

Correct dispose about the power supply.

Function displaye



Operation instruction



Plug in, turn on the switch on the back of the handrail, the machine will make a droning sound and the time display screen will displaying "88" the calorie display screen will displaying, now, the machine is at the state of h-i standby mode. push the switch key, when the switch is on, the machine is put in working order. push the switch key once more, then the machine back to h-i standby mode.

Under the h-i standby mode, the users have to take off their shoes, stand on the step plate and hold the handrail, then push the switch key, after the machine is put in working order, the time display screen displaying: the calorie implied time-set is 2 mins, energy consuming is zero and the machine is working at the lowest speed, that is speed 1. the machine is also working under the manual mode, the machine will shut off automatically and back to the h-i standby mode if not push any key.

At the state of working order, the functions of every key-press are as follows:

- 1: push the switch key, the machine is put in h-i standby mode
- 2: push the mode key: users can choose the working mode, which the users like best. according to requirment.
- 3: push the time key, the massage time is adjustable 30seconds, 1min 2mins 3mins 5mins
- 4: push the reset key, the calorie display reset to 05: switch the speed knob, we can adjust the working speed of the machine and choose the speeds from 1 to 16.

Safety notice

Be sure turn off the switch of power and pull out the plug after using "Vibration Massager"

Don't touch the power or pull out the plug is your hands are wet. When Pull out plug, please hole its tightly instead of holding the wire.

Don't put the wire under heavy things.

Don't entwine wire around the "Vibration Massager", so as not to damage the wire causing a fire or electric leakage.

If the plug, wire or connection is loose, please don't use the "Vibration Massager".

Operation circumstance

Don't use the product in wet and dirty collected circumstances to

avoid the electric leakage and machine malfunction

don't use the machine at the midnight fo as not affect other's sleep.

(This appliance is not intended for use by persons (including children) with reduced physical, sensory or mental capabilities, or lack of experience and knowledge, unless they have been given supervision or instruction concerning use of the appliance by a person responsible for their safety. Children should be supervised to ensure that they do not play with the appliance. "if the supply cord is damaged, it must be replaced a special cord or assembly available from the manufacturer or its service agent.)

Maintenance of product

Make sure that you have turned off the power switch and pull out the plug before daily maintenance.

Don't use formaldehyde or organic solvent to clean so as to avoid damage to the fittings.

If there is stubborn spot of oil, please use a cotton cloth with cleanser to clean and then use a dry cloth to wipe off, finally use a dry cloth to clean up.

Around the switch and the remote handle controller, it is forbidden to use wet cloth to clean. please use soft dry cloth.

Don't dip the cleaner into the ventilate window in the backrest in order to avoid danger.

Assembly chart of handles



Assembly chart of handles

Assembly Chart of Handles :

■ **Open the packing:** Taking out all fittings, the main body , tools and wrapping plastic out of the carton. (as picture ① carefully .)

■ **Take the accessories out of the wrapping plastic.** (as picture ②)

■ Assembling process:

Like assembling picture ③ ,take up the armrest putting the spring string into the alumina tube ,and let the alumina tube aim at the alumina tube , and then press downward , making sure the screw holes on the same line .

Like assembling picture ④ ,unscrew the cover-model nut taking down the flat- gasket and lockgasket and making the screw through the screw holes of the armrest bush . pull the lockgasket,flat-gasket and cover-model gasket on the screw, using your hands to screw the cover-model gasket. using M6 hexagon spanner screws two cover-model gaskets (as picture ⑤).

Insert SM insert line as picture ⑥ like assembling picture ⑦ put the alumina tube into the main body ,aiming at the screw hole of the main body ,making sure the screw holes on the same line ,then using the three locknuts with lockgaskets to screw it into the holes and fix it tightly .

Like assembling picture : put your hands on the armrest , lifting it slowly to adjust the height accorging to the use's height .we designed two fixing points . When you choose one kind of height , making sure all the holes are on the same line , then using the locknut with lockgasket to screw it into the hole and then fix it tightly . (as picture 8)